



HKU
SWSA

Department of Social Work and Social Administration
The University of Hong Kong
香港大學社會工作及社會行政學系

AI generated language models

As per the 2023 – 24 course outlines of SOWK4006, 4007, 6225 & 6231

- ‘In order to maintain clients’ confidential data and in line with the ethical practice of the profession and the requirements of the personal data (Privacy) Ordinance, 1995, which are reiterated in the social work fieldwork placement handbook (pp.16), it is prohibited to use the AI generated language models for fieldwork courses.’**

2023-24 CONCURRENT PLACEMENT ORIENTATION SERVICES FOR THE ELDERLY



2.9.2023

EDITH FUNG

**WHAT DO YOU KNOW
ABOUT AGEING?**

香港長壽長者的數目急劇增加，百歲長者人口由**2011**年的**1,890**人增加至**2021**年的**11,575**人，升幅超過六倍，本港百歲長者人口比例僅次於日本。

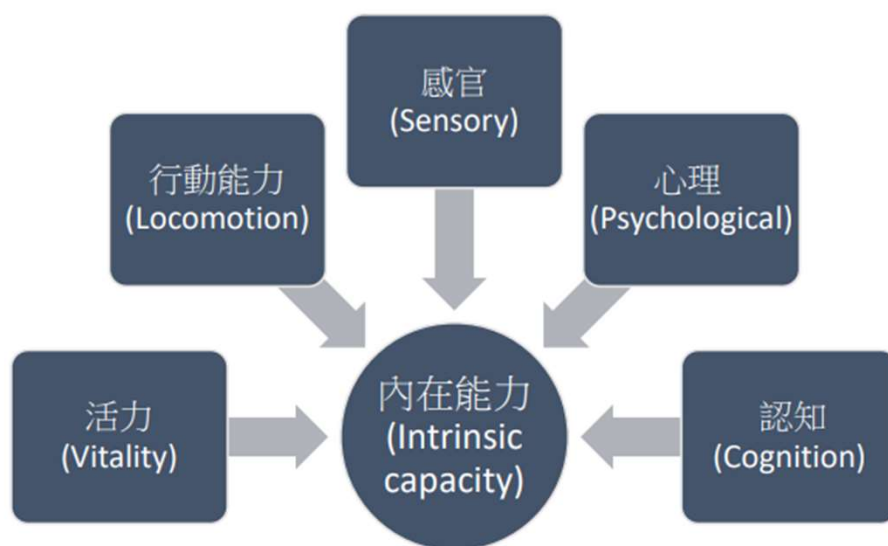
Hong Kong Centenarian Study

一個由本地及海外學者、醫護和社福專業組成的研究團隊於新冠疫情期間（**2021**年**4**月至**2022**年**9**月），以電話訪問或面談方式接觸**151**位**95**歲或以上於社區居住的長者的照顧者。

受訪家庭的長者中，八成年齡介乎**95-99**歲，最年長為**106**歲；性別以女性居多，佔七成半。照顧者方面，超過五成半的年齡已屆**65**歲或以上，最年長的照顧者為**92**歲；八成照顧者為長者的子女。

<https://hkcentenarian.hksyu.edu/>

以世衛「健康老齡化」的內在能力模型了解 長者健康



- * Health Aging
- * Frailty
- * Intrinsic Capacity

WHO concept of intrinsic capacity (IC) so that it can be utilized in clinical settings, including prevention and health-promotion programmes

<https://www.who.int/publications/i/item/WHO-FWC-ALC-17.2>

Source: https://hkcss.org.hk/upload/Press/20230313_Centenarian%20Study_Presentation%20Slide.pdf

長者內在能力	研究結果
活力	<ul style="list-style-type: none"> ▪ 近七成半長者有三種或以上的長期病患，例如高血壓、心血管病、白內障、骨質疏鬆、糖尿病等。 ▪ 五成半身體衰弱，另近四成屬衰弱前期 ▪ 逾兩成半需要使用五種或以上藥物
行動能力	<ul style="list-style-type: none"> ▪ 約有一半長者於以下至少一項不能自理或需要協助，包括洗澡、穿衣、上廁所、室內移動、控制大小便、進食 ▪ 只有一成多能夠上十級樓梯或步行三個街口 ▪ 近兩成在最近六個月內曾經跌倒
感官	<ul style="list-style-type: none"> ▪ 四成半長者有視力障礙 ▪ 近六成有聽力障礙
心理	<ul style="list-style-type: none"> ▪ 逾六成長者感覺越老越沒用 ▪ 逾兩成半經常感到孤單、緊張、害怕 ▪ 近三成出現抑鬱情緒 ▪ 一成出現焦慮情緒
認知	<ul style="list-style-type: none"> ▪ 逾三成半長者確診有認知障礙症 ▪ 超過七成照顧者認為長者於最近一年認知能力下降



Source: <http://cc-hkcss.mail-lm.hk/a/s/1934547-46c0d4aa15e88939f3ac397c9cb51fec/660781>

MR AND MRS. YU'S STORY TELLS US

1. **Singleton** – Elderly living alone
2. **Old-aged Caregiver**
3. **Polypharmacy** – living with multiple medical conditions , regular use of at least 5 medications
4. **Loneliness**
5. **Person living with Dementia**
6. **Ageing in Place** (居家安老)
7. **Resident Home** – Long Queue and low Quality of Life compared with living at their own homes

<https://youtu.be/5YujkhNcowc>

Caregiver Supports and Advocacy



Source: 港島西聯網開展「醫家友支援計劃」



Picture source: <https://www.channelfutures.com/>

CHALLENGES – BIOLOGICAL



Physical changes:

- Weak leg
- Poor eyesight
- Poor Taste buds
- Hearing Loss

Illness:

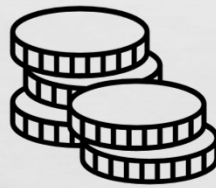
- Chronic e.g High blood pressure, diabetes
- Acute e.g. Dilirium, Pneumonia
- Life-threatening e.g. Cancer

CHALLENGES – SOCIAL



- Empty Nest
- Living Alone (Singleton)
- Loss of Social Role e.g. Retirement
- **Social Isolation**
- Elderly Abuse and Neglect
- Grief and bereavement

CHALLENGES – FINANCIAL



- Low Saving
- No Income
- CSSA
- Elderly Financial Abuse / Exploitation
- Losing money to Fraud (Scam)

CHALLENGES – PSYCHOLOGICAL & MENTAL



- Depression
- Anxiety
- Psychosis
- Insomnia
- Feeling of guilt; helpless
- Loneliness
- Low self-esteem
- Poor Cognition – Mild Cognitive Impairment (MCI) / Dementia
- Elderly Suicide

去年錄1,080宗自殺創15年新高 長者佔四成四 機構籲多與他們互動

【獨媒報導】香港撒瑪利亞防止自殺會今（29日）發表統計分析，發現去年全港自殺率為15年以來最高，錄得1,080宗個案，其中60歲或以上的長者自殺數字更打破過往50年紀錄，佔整體約四成四，該會建議年青人多與長者互動，並擴闊他們的社交圈子；又指精神病患者傷害別人的比例不高，呼籲大眾不應標籤他們。

https://www.inmediahk.net/node/%E6%94%BF%E7%B6%93/%E5%8E%BB%E5%B9%B4%E9%8C%841080%E5%AE%97%E8%87%AA%E6%AE%BA%E5%89%B515%E5%B9%B4%E6%96%B0%E9%AB%98-%E9%95%B7%E8%80%85%E4%BD%94%E5%9B%9B%E6%88%90%E5%9B%9B-%E6%A9%9F%E6%A7%8B%E7%B1%B2%E5%A4%9A%E8%88%87%E4%BB%96%E5%80%91%E4%BA%92%E5%8B%95?fbclid=IwAR12KEx0I1j95xU4q0MD7DZD1BUBp0zRmnWzAHdyp33X9kDbvgp_IF7zsI0_aem_ASnh8ta6rcDm9DvgarvVBGi6g3QkAyNymM3xk71UtmQjT0qscQJUeV8UCj2KYn0r2jk

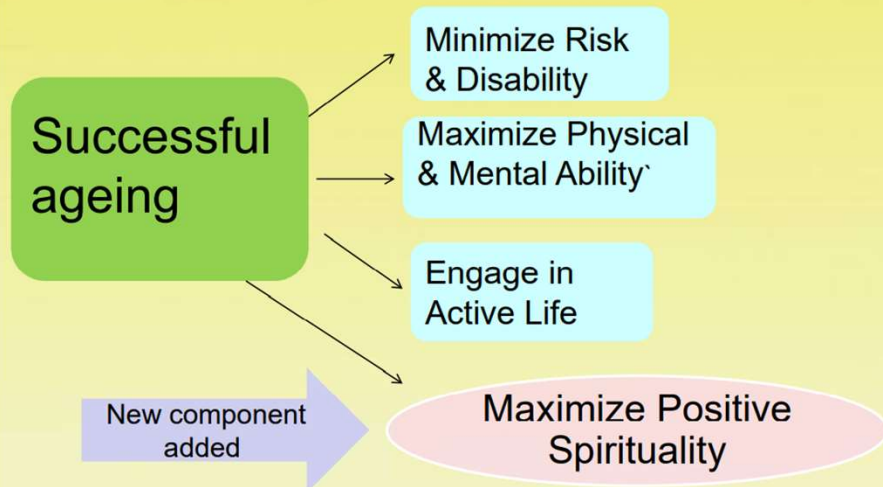
香港撒瑪利亞防止自殺會根據死因裁判庭每年公布的自殺數據統計，發現本港60歲以上長者去年的自殺死亡宗數創1973年以來新高，共446宗。防止自殺會總幹事曾展國表示，對比過去數年，長者自殺宗數一直較其他年齡層高企，甚至比社會關心的青少年高出30%至40%；而男性自殺比率較高、求助比例低的原因，他則認為是因為男性自尊心較高，而男性長者更加受傳統思想影響，「唔想麻煩人、唔想畀人知」，子女結婚後離家更令長者容易產生孤獨感，自殺念頭日增。另外，由於移民潮湧現，該團體亦有義工選擇離港，導致接聽熱線電話及提供服務的人手不足。亦有家庭移民令長者獨留在港，造成獨居老人數量增加，團體透露自殺危機處理中心的求助個案中，接獲約10宗涉及子女移民被獨留在港、孤獨感日增而有自殺念頭的長者個案。

阿樂母親於5年前自殺身亡，事緣於母親經常稱身體不適，但阿樂陪同母親看醫生後又未診斷出任何病痛，阿樂認為「可能佢(母親)接受唔到身體老化」，又稱事後其實有發現母親有抑鬱，亦有一點自殺傾向的蛛絲馬迹，但因缺乏對抑鬱症的認知而未有發現母親情緒出現問題。母親自殺後阿樂大受打擊，他坦言事發前「外人睇係一個好幸福嘅家庭，我之前都咁覺得」，但在母親離世後他甚至想「跟住走」，及後他獲社工協助，直至半年前才逐漸解開心結。

https://hk.on.cc/hk/bkn/cnt/news/20220827/bkn-20220827123708044-0827_00822_001.html

OPPORTUNITY - SUCCESSFUL AGING

Revised Rowe and Kahn Model of Successful Ageing



• Spirituality is not identical to religion: Hill's study highlighted the differences:

Spirituality	Religion
Search for meaning in life	One's affiliation with an organised set of belief, values, traditions, and ritual
An encounter with transcendence	Primary function: to know God
Individual experience with personal transcendence, supra-conscious sensitivity, and meaningfulness	Formally structured religious institution

(Hill et al, 2000)

SOURCE: CADENZA TRAINING PROGRAM : CTP002:PROMOTING PSYCHOSOCIAL AND SPIRITUAL WELL-BEING OF OLDER PEOPLE , 2012)

OPPORTUNITY – CREATIVE AGEING

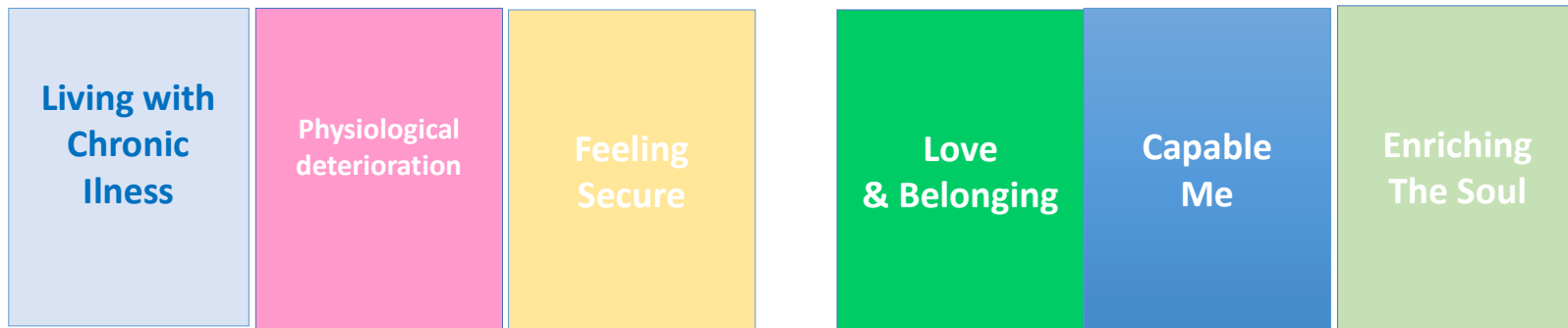
Although creative ageing is a movement that's been recognised for more than 50 years, it has become an area of burgeoning academic interest across the past 20 years. In broad terms, creative ageing is using arts and cultural activities to promote imagination and support older people to age well.

Source: <https://www.newcastle.edu.au/hippocampus/story/2022/creative-ageing-its-all-in-your-mind>

Each elderly client is unique and they are not 1 big homogenous group .

The concept of : People in Environment (physical and social environment are powerful influences on Healthy Ageing. Yet the relationships we have with our environments are shaped by factors such as the family we were born into, our sex, our ethnicity, and financial resources.)

Spectrum of needs of elderly



Illness ----- Wellness ----- Well-being

OPPORTUNITY - SUCCESSFUL AGING

The Jockey Club Age-friendly City Project

<https://www.jcafc.hk/en/index.html>

JC Joyage Project

<https://jcjoyage.hk/>

JC Golden Age Journey Project

<https://jcgoldenagejourney.hk/>

OPPORTUNITY - SUCCESSFUL AGING

JC End-of-Life Community Care Project

<https://foss.hku.hk/jcecc/en/>

JC Cadenza for Elder Care

<https://www.cadenza.hk/e-tools/zh/>

Sau Po Centre On Ageing

<https://www.ageing.hku.hk/>

OPPORTUNITY - SUCCESSFUL AGING

The Hong Kong Council of Social Service

https://www.hkcss.org.hk/core-businesses/service-development/elderly-service/?_page=3&lang=en

ELDERLY SERVICES PROGRAM PLAN – LABOUR AND WELFARE BUREAU



Source: <https://www.lwb.gov.hk/en/highlights/elderservicesprogrammeplan/index.html>

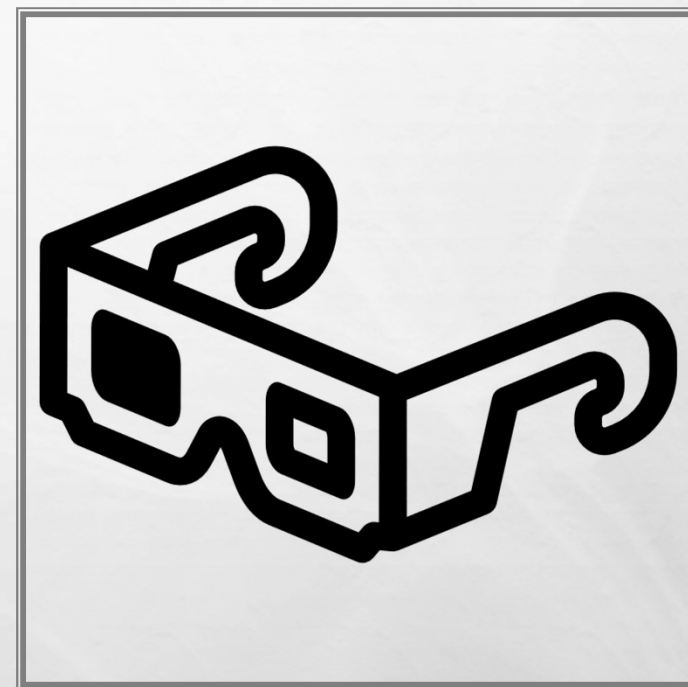
ELDERLY SERVICES MISSION

SENSE OF BELONGING, SENSE OF
SECURITY AND SENSE OF WORTHINESS

老有所屬、老有所養、老有所為

OBJECTIVES OF ELDERLY SERVICES

- To promote the well-being of elders in all aspects of their life through the provision of a wide spectrum of services to enable them to **remain living in the community for as long as possible**
- To provide residential care that suits the varying needs of elders whenever necessary



[HTTP://WWW.SWD.GOV.HK/EN/INDEX/SITE_PUBSVC/PAGE_ELDERLY/SUB_INTRODUCTI/](http://www.swd.gov.hk/en/index/site_pubsvc/page_elderly/sub_introductions/)

CONTINUUM OF CARE 「持續照顧」

LONG TERM CARE (LTC)

Residential Care Services

Community Care Services

Integrated; Multi-Service



LONG TERM CARE SERVICES FOR THE ELDERLY

- LONG TERM CARE (LTC):
 - RESIDENTIAL CARE SERVICES (RCS)
 - COMMUNITY CARE SERVICES (CCS)
- Government's policy to promote " ageing in place as the core, institutional care as back up"



STANDARDIZED CARE NEED ASSESSMENT MECHANISM

(SCNAMES)

- Since 2000, the implementation of standardized care need assessment mechanism for elderly to ascertain the care needs of the frail elderly.
THE UPDATED SCNAMES HAS BEEN IMPLEMENTED SINCE 2 JULY 2021.
- Adopted minimum data set-home care (MDS-HC) is adopted to ascertain the care needs of elders and match them with appropriate services
- https://www.swd.gov.hk/en/index/site_pubsvc/page_elderly/sub_standardis/



STANDARDIZED CARE NEED ASSESSMENT MECHANISM

(SCNAMES)

- The mechanism covers applications for admission to homes for the aged, care-and-attention homes, nursing homes, day care centres for the elderly, enhanced home and community care services, and integrated home care services (for disabled and frail cases).

RESIDENTIAL CARE SERVICES (RCS)

- CARE AND ATTENTION HOMES FOR THE ELDERLY
 - NURSING HOMES
 - ENHANCED BOUGHT PLACE SCHEME
 - PILOT SCHEME ON RESIDENTIAL CARE SERVICE VOUCHER FOR THE ELDERLY (RCSV)
-
- https://www.Swd.Gov.Hk/en/index/site_pubsvc/page_elderly/sub_residentia/

OVERVIEW OF RESIDENTIAL CARE SERVICES FOR THE ELDERLY

(AS 31.12. 2022)

Overview of Residential Care Services for the Elderly

	Total number of places as at 31.12.2022			
	Subsidised places in subvented homes, self-financing homes and contract homes	Subsidised places under Enhanced Bought Place Scheme	Non-subsidised places in non-profit-making self-financing homes/ contract homes	Total
Hostels for the elderly	-	-	-	-
Homes for the Aged	9	-	462	471
Care and Attention Homes for the Elderly	15 535 (Note 1)	10 988	2 991	29 514
Nursing Homes	4 508 (Note 2)	-	1 882 (Note 3)	6 390
Total	20 052	10 988	5 335	36 375

Note 1: Including 29 care-and-attention places providing a continuum-of-care. Of them, there is a total of 1 623 places of agency quota in 73 residential care homes for the elderly operated by 29 non-governmental organizations.

Note 2: Including nursing home places under the Nursing Home Place Purchase Scheme

Note 3: Including places provided by self-financing nursing homes purely under the registration regime administered by the Department of Health

WAITING LIST FOR SUBSIDISED RESIDENTIAL CARE SERVICES FOR THE ELDERLY

[AS 28.2.2023]

Waiting list for subsidised residential care services for the elderly

- As at 28 February 2023, there were a total of 17 393 applicants being waitlisted for various types of subsidised residential care services (RCS) for the elderly in the Central Waiting List for subsidised long term care services. Details were as follows:

Subsidised RCS for the elderly	No. of applicants Note ¹
Care and attention places	14 495
Nursing home places	2 898
Total	17 393

Waiting time

- With reference to information as at 28 February 2023, the average waiting times for various types of subsidised RCS for the elderly were as follows:

Subsidised RCS for the elderly	Waiting time (in months) Average from the past 3 months Note ²
Care and attention places	
Subvented homes and contract homes	33
Private homes participating in the Enhanced Bought Place Scheme	5
Overall	15
Nursing home places Note ³	19

Source: [https://www.swd.gov.hk/storage/asset/section/632/en/LTC_statistics_HP-Eng\(202302\).pdf](https://www.swd.gov.hk/storage/asset/section/632/en/LTC_statistics_HP-Eng(202302).pdf)

CARE AND ATTENTION HOME FOR THE ELDERLY (C&A HOME)

- Provide residential care, meals, personal care and **limited nursing care** for elders who suffer from poor health or physical/mild mental disabilities with deficiency in activities of daily living but are mentally suitable for communal living and are **assessed to be recommended for Care and Attention Home Under The Standardised Care Need Assessment Mechanism For the Elderly Services.**
- **Some are provided by contract homes and private homes participating in the enhanced bought place scheme**
- Target: elders who require personal care and attention in the course of daily living and are unable to live at home. **No intensive nursing care is required**

CARE AND ATTENTION HOME FOR THE ELDERLY (C&A HOME)

- Superintendent
- Social welfare team (ASWO, SWA, program worker, program assistant)
- Nursing team (registered nurse, enrolled nurse, pharmacist, health workers, care workers, care assistants, chef, cleaners)
- Rehabilitation team (physiotherapist, occupational therapist, rehabilitation assistants)
- Administration team (administrative assistant, clerk, driver)

NURSING HOMES

- Provide residential care, meals, personal care, **regular basic medical nursing care**, and social support for elders who suffer from poor health or physical/mental disabilities with deficiency in activities of daily living but are mentally suitable for communal living, and are assessed to be for **nursing home under the SCNAM**.

* Target: elders who require **medical, nursing, rehabilitative and personal care** in daily living activities and are unable to live at home. Cannot be adequately be taken care of in care and attention homes for the elderly yet do not require the intensive medical and nursing care provided in infirmaries.

ENHANCED BOUGHT PLACE SCHEME

SWD has purchased places from private homes for the elderly under the enhanced bought place scheme (EBPS) since 1998, with a view to upgrading the service standard of these homes through enhanced service requirements in terms of staffing and space standard.

Increase the supply of subsidised places so as to reduce elders' waiting time for subsidised care-and-attention places.

Nature of service and eligibility criteria same as care and attention homes for the elderly

Residential Care Service Voucher Scheme for the Elderly

Residential Care Service Voucher Scheme for the Elderly

Introduction

The Residential Care Service Voucher (RCSV) Scheme for the Elderly (the Scheme), adopting the "money-following-the-user" principle, provides an additional choice for elderly persons in need of residential care services and waitlisted for care-and-attention (C&A) places on the Central Waiting List (CWL).

Starting from 2022-23, the Government increased the number of RCSVs to 4 000 so as to benefit more elderly persons.

Promotion Videos of the Scheme (Chinese Version Only)



Service Leaflet



(Please click the link below to download the service leaflet)

 (Acrobat Document)

 (MSWord Document) (Text Only)

[https://www.swd.gov.hk/en/index/site_pubsvc/page_elderly/sub_residentia/id_psrcsv/#:~:text=The%20Pilot%20Scheme%2C%20adopting%20the,Central%20Waiting%20List%20\(CWL\).](https://www.swd.gov.hk/en/index/site_pubsvc/page_elderly/sub_residentia/id_psrcsv/#:~:text=The%20Pilot%20Scheme%2C%20adopting%20the,Central%20Waiting%20List%20(CWL).)

RESIDENTIAL CARE SERVICE VOUCHER SCHEME FOR THE ELDERLY

Features of the Scheme

1. The "money-following-the-user" principle provides greater flexibility and choice: elderly persons can freely choose and switch among residential care homes for the elderly (RCHEs) under the Scheme according to their needs.
2. The "users pay in accordance with affordability" principle allows elderly person who can afford less to receive more subsidy from the Government: the co-payment level is determined according to the asset and income of the elderly person on an individual basis. Elderly persons at Level 0 (the lowest level) do not have to pay for the "standard service package" covered by the monthly voucher value.
3. Waiting time is shortened: elderly persons can receive subsidised residential care services in a shorter period of time.
4. Six-month trial period: elderly persons can consider admission to RCHEs and try to adapt to life in RCHEs.

RESIDENTIAL CARE SERVICE VOUCHER SCHEME FOR THE ELDERLY

Eligibility

All elderly persons who have been assessed and recommended for Residential Care Services under SWD's Standardised Care Need Assessment Mechanism for Elderly Services and are **waitlisted for C&A places** on the CWL for Subsidised Long Term Care (LTC) Services^{Note}.

[Note: Not including those whose status on the CWL are "inactive", those who are offered subsidised placement and those who have utilised their RCSV under the same Long Term Care Services Delivery System Serial Number.]

https://www.swd.gov.hk/en/index/site_pubsvc/page_elderly/sub_residentia/id_psrcsv/#Eligibility

COMMUNITY CARE SERVICES FOR THE ELDERLY (CCS)

- DISTRICT ELDERLY COMMUNITY CENTRE (DECC)
- NEIGHBOURHOOD ELDERLY CENTRE (NEC)
- DAY CARE CENTRE/UNIT FOR THE ELDERLY (DCC)
- INTEGRATED HOME CARE SERVICES (IHCS)
- ENHANCED HOME AND COMMUNITY CARE SERVICES (EHCCS)
- SUPPORT TEAM FOR THE ELDERLY (STE)
- COMMUNITY CARE SERVICE VOUCHER FOR THE ELDERLY (CCSV)

- Introduction
- District Elderly Community Centre (DECC)
- Support Teams for the Elderly (STE)
- Neighbourhood Elderly Centre (NEC)
- Social Centre for the Elderly (S/E)
- Carer Support Service
- Holiday Centre for the Elderly
- Opportunities for the Elderly Project (OEP)
- Day Care Centre/Unit for the Elderly (DEs/DCUs)
- Day Respite Service for Elderly Persons
- Enhanced Home and Community Care Services (EHCCS)
- Integrated Home Care Services (IHCS)
- Overview on Community Care Services for the Elderly
- Senior Citizen Card Scheme
- Pilot Scheme on Community Care Service Voucher for the Elderly (CCSV)
- Services for Prevention and Handling of Elder Abuse
- Working Group on Elder Abuse
- Enquiries

- **SOURCE: [HTTPS://WWW.SWD.GOV.HK/EN/INDEX/SITE_PUBSVC/PAGE_ELDERLY/SUB_CSSELDERLY/](https://www.swd.gov.hk/en/index/site_pubsvc/page_elderly/sub_csselderly/)**

NEC

Scope of Service

- | | |
|---|---|
| ◆ Health education | ◆ Educational and supportive programmes on dementia |
| ◆ Educational and developmental activities | ◆ Counselling services |
| ◆ Provision of information on community resources and referral services | ◆ Reaching out and networking |
| ◆ Volunteer development | ◆ Social and recreational activities |
| ◆ Carer support services | ◆ Meal service |
| | ◆ Drop-in service |

DECC

Scope of Service

- | | |
|---|---|
| ◆ Community education | ◆ Carer support services |
| ◆ Health education | ◆ Provision of information on community resources and referral services |
| ◆ Educational and development activities | ◆ Social and recreational activities |
| ◆ Reaching out and networking | ◆ Meal services |
| ◆ Volunteer development | ◆ Drop-in service |
| ◆ Counselling services | |
| ◆ Educational and supportive programmes on dementia | |

FOR DECC ONLY

- SUPPORT TEAM FOR THE ELDERLY (STE)
- DEMENTIA COMMUNITY SUPPORT SERVICES
- INTEGRATED HOME CARE SERVICE (IHCS)/ENHANCE HOME CARE SERVICE (EHCCS)

COMMUNITY CARE SERVICE VOUCHER FOR THE ELDERLY

- 'Money-following-the-user' approach
- Eligible elderly persons may choose community care services (CCS) that suit their individual needs with the use of community voucher.
- There are six categories of co-payment. : Elderly persons are required to pay for the co-payment amount according while the government will pay for the remaining amount of the service package value.
- “Affordable users pay” principle.

COMMUNITY CARE SERVICE VOUCHER FOR THE ELDERLY

● Service Delivery Mode and Service Item

The scope of services under the Scheme is similar to the existing subsidised **Day Care Centre for the Elderly** and **Enhanced Home and Community Care Services**. The service delivery modes are as follows:

- Centre-based service (full-time or part-time)
- Home-based service
- Centre-based and Home-based service (mixed mode)

**Household Monthly Income and Six Categories of Co-payment
for the Third Phase of the Pilot Scheme on Community Care Service Voucher for the Elderly
(with effect from 1.4.2022) ^{Note 1}**

Co-payment Category	I (for CSSA voucher holders)	II	III	IV	V	VI ^{Note 2}
Co-payment %	5%	8%	12%	16%	25%	40%

COMMUNITY CARE SERVICE VOUCHER FOR THE ELDERLY

Community Care Service Items

Centre-based Services

- Full-time day care service (12 sessions per week, each session not less than 4 hours)
- Day care session (4 hours)
- Day care service outside normal operating hours
- Transportation service (vehicle to/from centre)
- Escort for day care service (home to/from vehicle)

https://www.swd.gov.hk/storage/asset/section/2733/en/Service%20item/c._CCSV_Service_Items_Regularisati on_ENG_W3C_proceeded.pdf

COMMUNITY CARE SERVICE VOUCHER FOR THE ELDERLY

Home-based Services

Home Care Services

- Rehabilitation exercise
 - delivered by physiotherapist / occupational therapist
 - delivered by supporting staff¹
- Nursing care
 - delivered by enrolled / registered nurse
 - delivered by supporting staff¹
- Personal care delivered by supporting staff²

Home Support Services

- Home making
- Escort
- Meals delivery
- Elder sitting
 - delivered by professional staff²
 - delivered by supporting staff¹
- On-site carer training
 - delivered by professional staff²
 - delivered by supporting staff¹
- Environmental risk assessment/home modification recommendation delivered by physiotherapist / occupational therapist

https://www.swd.gov.hk/storage/asset/section/2733/en/Service%20item/c._CCSV_Service_Items_Regularisati on_ENG_W3C_proceeded.pdf

COMMUNITY CARE SERVICE VOUCHER FOR THE ELDERLY

Others

- Residential respite service
- Speech therapy service
- Soft meals (additional item for day care service / meals delivery)
- Rental Service of Assistive Technology products
- Home-based services (except meals delivery and soft meals) / speech therapy service delivered outside pledged service hours³

https://www.swd.gov.hk/storage/asset/section/2733/en/Service%20item/c._CCSV_Service_Items_Regularisati on_ENG_W3C_proceeded.pdf

ELIGIBILITY OF COMMUNITY CARE SERVICE VOUCHER

Eligibility

Elderly persons who have been assessed and recommended for Community Care Services or Residential Care Services under the Standardised Care Need Assessment Mechanism for Elderly Services, and are waitlisting for subsidised CCS and/or residential care services (RCS) on the Central Waiting List (CWL) for Subsidised Long Term Care (LTC) Services without any kind of RCS or subsidised CCS being received.

While participating in the Scheme, SWD will change the elderly persons' applications for LTC services on the CWL into "inactive cases". The elderly persons may, if needed, request their responsible workers to reactivate their case status on the CWL for LTC services by changing the "inactive cases" to "active cases" and their waitlisting positions will follow the original application dates.

https://www.swd.gov.hk/en/index/site_pubsvc/page_elderly/sub_csselderly/id_pscsv/

Sample FSAs

- [Elderly Services](#)
- [Family and Child Welfare Services](#)
- [Rehabilitation Services](#)
- [Youth and Corrections Services](#)
- [Other Services](#)

SDs

Downloading of the materials for reading and printing can be done through reader software which is available free at the Adobe Systems Inc. Website.

Sample FSAs

Elderly Services

Generic Sections

1. [Care and Attention Homes Providing Continuum of Care and Conversion Homes Providing Continuum of Care](#)

Funding and Service Agreement

Service-specific Sections

Funding and Service Agreement

Funding and Service Agreement¹

Care and Attention Homes Providing Continuum of Care and Conversion Homes Providing Continuum of Care

I Service Definition

Introduction

Care and Attention Homes Providing Continuum of Care (the Homes) refer to the provision of continuum of care for elders of moderate level of impairment on admission who may deteriorate to severe level of impairment save for a level pointing to infirmary care.

- Home
- What's New
- About Us
- Publications & Press
- Releases
- Annual Service
- Provision and Statistics
- Annual Highlights
- Access to Information
- Accessibility of
- Government Premises, Facilities and Services
- Public Services
- Districts Information
- NGO Corner
- GeoInfo Map

Home > [NGO Corner](#) > [Service Performance Monitoring](#) > [Sample FSA*/SDs](#)

Sample FSAs

- [Elderly Services](#)
- [Family and Child Welfare Services](#)
- [Rehabilitation Services](#)
- [Youth and Corrections Services](#)
- [Other Services](#)

SDs

Downloading of the materials for reading and printing can be done through the use of reader software which is available free at the Adobe Systems Inc. Website.

Sample FSAs

Elderly Services

Generic Sections

1. [Care and Attention Homes Providing Continuum of Care and Conversion Home Care](#)

Funding and Service Agreement

Service-specific Sections

Funding and Service Agreement

Funding and Service Agreement¹

District Elderly Community Centre cum Day Care Unit and Neighbourhood Elderly Centre

I Service Definition

Introduction

A District Elderly Community Centre (DECC) is one type of community support services at the district level providing holistic services to cater for the multifarious needs of both healthy and frail elderly persons, their informal carers, including their medical and health, psycho-social and personal care needs. Priority should be given to vulnerable and frail elderly persons, including those with dementia who may need support services to continue to stay in their own homes and communities. DECC should also perform the functions of support team for the elderly (STE). To enrich the function of DECC to serve frail elderly persons and their carers

Source: https://www.swd.gov.hk/storage/asset/section/783/en/DECC_cum_DCU_and_NEC_Eng.pdf

SWD – Dementia Friendly Community Campaign

Dementia Community Support Scheme

<https://www.swd.gov.hk/dementiacampaign/en/whatsnew.htm>

1



Carer Support Service

- Carer Support Service aims at facilitating and supporting carers to take care of elders in the community. Most of the community support service units including DECC, NEC, D/Es and DCUs, IHCS and EHCCS, provide various kinds of carer support service.

Scope of Service

- Skill-training and educational programmes
- self-help and mutual support groups
- resource corner
- simple counselling and referral services
- information giving and supply of reference materials relating to care of elders
- demonstration/loan of rehabilitation-aid equipment
- social and recreational activities

Target Group

- Informal carers such as family members, relatives and friends who take care of elders in the community; and
- General public.

Fees and Charges

- Annual membership fee
- Fees for individual programme, please enquire the community support service units concerned.

Lists of Units

- Please refer to the lists of District Elderly Community Centres, NEC, D/Es and DCUs, IHCS and EHCCS.



Pilot Scheme on Living Allowance for Carers of the Elderly Persons from Low Income Families

Please refer to the homepage of [Community Care Fund Assistance Programmes](#) for further information of 'Pilot Scheme on Living Allowance for Carers of the Elderly Persons from Low Income Families'.

Community Care Fund Assistance Programmes

- Introduction
- What's New
- Details of Current Programmes
 - Pilot Scheme on Support for Elderly Persons Discharged from Public Hospitals after Treatment (Extended Pilot Scheme)
 - One-off Ex-gratia Cash Allowance for Locally Confirmed 2019 Coronavirus Disease Patients
 - Pilot Scheme on Home Care and Support for Elderly Persons with Mild Impairment (Extended Pilot Scheme)
 - Pilot Scheme on Living Allowance for Low-income Carers of Persons with Disabilities Phase III
 - Pilot Scheme on Living Allowance for Carers of Elderly Persons from Low-income Families Phase IV
 - Special Care Subsidy for the Severely Disabled (Extended Programme in 2020)
 - Pilot scheme on providing subsidy for Higher Disability Allowance recipients in paid employment to hire carers (Extended Pilot Scheme in 2020)
 - Assistance Programme to Improve the Living Environment of Low-income Subdivided Unit Households
- Completed Programmes

**THE PILOT SCHEME ON SUPPORT FOR ELDERLY
PERSONS
DISCHARGED FROM PUBLIC HOSPITALS AFTER
TREATMENT (EXTENDED) SEPT 2023**

支援在公立醫院接受治療後離院的長者試驗計劃

- The pilot scheme was implemented in February 2018 and has been extended for 32 months to the end of September 2023.
- The pilot scheme will be implemented under a new mode of operation starting from October 2021 and will continue to be administered by the social welfare department (SWD).

Source; https://www.Swd.Gov.Hk/en/index/site_pubsvc/page_supportser/sub_tcs/

THE PILOT SCHEME ON SUPPORT FOR ELDERLY PERSONS DISCHARGED FROM PUBLIC HOSPITALS AFTER TREATMENT

支援在公立醫院接受治療
後離院的長者試驗計劃

Eligibility Criteria

The beneficiaries of the Extended Pilot Scheme should be:

- aged 60 or above; and
- with temporary loss of self-care ability due to illness, and assessed by medical staff of the Hospital Authority (HA) to be in need of transitional care and support (i.e. in need of temporary residential care and/or community care and support services after discharge from hospitals), and not covered under the existing "Integrated Discharge Support Programme for Elderly Patients"(Note)

Note: At present, the Government, in collaboration with the HA, implements the Integrated Discharge Support Programme for Elderly Patients. The service targets are mainly elderly persons newly discharged from HA hospitals who have been assessed by HA medical staff to be at high risk of unplanned re-admission to hospital. The programme provides a range of support services (including discharge planning, transitional rehabilitation service, home care services and carer training) for these elderly persons, aiming at reducing their unplanned hospital re-admission risk.

Source: https://www.swd.gov.hk/en/index/site_pubsvc/page_supportser/sub_tcs/

SOCIAL SECURITY ALLOWANCE SCHEME

公共福利金計劃

Social Security Allowance Scheme

Provides a monthly allowance to
Hong Kong residents who are
65 years of age or above or
who are severely disabled

Old Age Allowance, Normal Disability Allowance, Higher Disability Allowance,
Old Age Living Allowance, Guangdong Scheme and Fujian Scheme

Source; https://www.swd.gov.hk/en/index/site_pubsvc/page_socsecu/sub_ssallowance/

Eligibility criteria

A person is eligible for Old Age Living Allowance (OALA) if he/she:

- ❖ is aged 65 or above;
- ❖ has been a Hong Kong resident for at least seven years and has resided in Hong Kong continuously for at least one year immediately before the date of application (absence from Hong Kong up to a maximum of 90 days during the one-year period is treated as residence in Hong Kong);
- ❖ is having an income and assets not exceeding the prescribed limits (see below table); and
- ❖ is not in receipt of Old Age Allowance (OAA) or Disability Allowance (DA) under the **Social Security Allowance Scheme** or assistance under the **Comprehensive Social Security Assistance Scheme**.

For details and other eligibility criteria of OALA, please refer to the **Social Security Allowance Scheme**.

Income and Asset Limits for OALA

The prescribed income and asset limits for OALA are listed below:

		Single person ⁽¹⁾	Married couple ⁽²⁾
OALA	Total income per month (with effect from 1 February 2023)	\$10,580	\$16,080
	Total asset value (with effect from 1 February 2023)	\$388,000	\$589,000

甚麼是緊急召援系統？ What is Emergency Alarm System



經濟援助

符合下列資格的人士，可向社會福利署申請經濟援助以安裝緊急召援系統：

- (一) 領取綜合社會保障援助（綜援）；以及
- (二) 屬單身人士，或與家人同住但乏人妥善照顧（例如其他家庭成員為病人或屬弱能人士）；以及
- (三) 符合下列其中一項條件：
 - a. 65歲或以上；
 - b. 介乎60至64歲，經公共醫療機構醫生證實傷殘程度超過百分之五十，或所患病症有可能對生命構成威脅，因而需要他人即時援助。

符合資格的綜援受助人，請在購買緊急召援系統前，先向所屬社會保障辦事處查詢，以確保申請手續順利進行。

此外，房屋署和香港房屋協會均設有特別津貼供合資格人士申請，以支付使用緊急召援系統的費用，詳情請聯絡：

- 公共屋邨住戶 - 各公共屋邨辦事處或致電2712 2712
- 居於香港房屋協會單位的住戶 - 各屋邨辦事處 / 屋苑管理處或致電2882 1717

贊印：



鳴謝意見提供 (排名不分先後)



資源局

機電工程署

2012年5月版

Source:
https://www.swd.gov.hk/tc/index/site_pubsvc/page_elderly/sub_EAS/

COMMON ASSESSMENT TOOLS

ADL	INDEX OF INDEPENDENCE IN ACTIVITIES OF DAILY LIVING (KATZ)
IADL	INSTRUMENTAL ACTIVITIES OF DAILY LIVING (LAWTON)
MOCA	MONTREAL COGNITIVE ASSESSMENT FOR MILD COGNITIVE DYSFUNCTION
DASS21	DEPRESSION, ANXIETY AND STRESS SCALE – CHINESE (DASS-C)
GDS	GERIATRIC DEPRESSION SCALE
GAD-7	GENERAL ANXIETY DISORDER
PHQ	PATIENT HEALTH QUESTIONNAIRE (DEPRESSION)
BHS	BECK HOPELESSNESS SCALE
UCLA LONELINESS SCALE	LONELINESS
CARER STRESS	ZARIT BURDEN SCALE
QOLS	SATISFACTION WITH LIFE SCALE

[About the Press](#) [For Authors](#) [Books](#) [Resources](#) [Updates](#)

[< Back](#)



預防長者自殺

實務及工具手冊

(Suicide Prevention for Older Adults: Practical Guide and Tools)

林一星、沈君瑜、陳潔英、黃樂仁、邱皓妍、陳熾良、郭韓韓

ISBN : 978-988-8754-22-9

Anthropology, Sociology, Psychology

May 2022

128 pages, 8" x 11"

FALL RISK ASSESSMENT (BY OT)

Assessment tool

- Fall assessment

- 1. Environmental Barrier Checklist

- A 20-items checklist that describe potential environmental hazards in hospital setting

- 2. Risky Behavior Checklist

- A 20-items checklist that describe potential risky behavior when performing occupations

- Modified Barthel Index (MBI)

POSSIBLE PLACEMENT HOURS

- Mainly **Monday to Friday. Saturday duty will subject to agency IC's approval**
- Usually **8/9 a.M. To 5/6 p.M.**
- Sometimes Sat/ Sun for programs



ASSIGNMENTS

- **1 group x 6 sessions**
- **1 program/project**
- **2 – 3 Cases**

GROUP/ZOOM GROUP

- Developmental group: positive aging, volunteer training, grandparenting....
- Therapeutic group: loneliness, chronic pain, insomnia, depression, life and death.....
- Carer support group: stroke, dementia...

GROUPWORK



耆康會懷熙葵涌長者地區中心

讓我抖一抖 照顧者舒壓小組

照顧者面對不少生活壓力，透過不同舒壓活動如放鬆肌肉練習、自製花束等，讓參加者舒壓忘憂，表達情緒，達至身心放鬆。

日期：7/12, 14/12, 21/12, 28/12/2022, 4/1/, 11/1/2023 (三) (共6節)

時間：下午2:30-下午4:00 (7/2 下午9:00-10:30)

地點：本中心

對象：有情緒或壓力的照顧者會員

名額：8人

費用：免費

活動查詢電話：2425 1281

負責同事：冼姑娘 (實習社工)

「守」下留「晴」 留守長者支援小組

「最近我的家人移居海外」...



心不安

神不定

食唔安

訓唔落

本小組將透過藝術及減壓手法
提升大家的應對能力
並互相應對壓力情緒，迎展新里「晴」

日期：2022年11月30日-2023年1月4日
(逢星期三，共6節)

時間：下午2時至3時30分

地點：中心三樓眾議坊

對象：最近家人移居海外之中心會員

負責同工：李樂生先生 (實習社工)

費用：全免 *名額6位，報名者需經實習社工評估*

查詢及報名：致電2653 6811/ 親身到中心報名

張貼日期：2022年10月28日-11月15日

保良局劉陳小寶長者地區中心

樂活330

整全健康小組

最緊要玩
得開心!



藝術創作

遊戲

學習身心靈健康

養生運動

呼吸練習

日期：2020年12月23、30日(三)
2021年1月6、13、20、27日(三)
(共6節)
時間：下午3:00 - 4:00
地點：中心雅樂
費用：全免
負責實習社工：邱駿彥 (聯絡：2177 6299 / 逢三、六)



GROUPWORK

快樂，你有得揀！



覺察能力



抗逆能力



正向思考



自信心

will
will
will

快樂，你有得揀！



小組規則



鄰舍輔導會

快樂，你有得揀！

第二節

工作紙 1：壓力溫度計

姓名：_____

姓別：_____

年齡：_____



請你為每天的壓力指數填上顏色。

2020-11-24 (星期二)	☆	☆	☆	☆	☆
2020-11-25 (星期三)	☆	☆	☆	☆	☆
2020-11-26 (星期四)	☆	☆	☆	☆	☆
2020-11-27 (星期五)	☆	☆	☆	☆	☆
2020-11-28 (星期六)	☆	☆	☆	☆	☆
2020-11-29 (星期日)	☆	☆	☆	☆	☆
2020-11-30 (星期一)	☆	☆	☆	☆	☆

PROGRAMS/PROJECTS

- Life and death education
- Advance Care Planning
- Family photo day
- Life book
- Elderly welfare
- Aged friendly community
- Festival

 基督教香港信義會
沙田多元化金齡服務中心

食得是福

認識吞嚥困難講座

內容：1. 認識吞嚥困難及症狀
2. 正確進食坐姿及吞嚥膳食知多少（有獎問答）
3. 教授簡單口部肌肉訓練（有趣口腔操）

日期：2022年11月22日（星期二）
時間：上午10時30分至11時30分
地點：信義會沙田多元化金齡服務中心
(2號房)

對象：金咭或銀咭會員
名額：20位（先到先得）
費用：免費
講師：實習社工 - 占sir
出席者可獲老友記煮食教學食譜咭

查詢：占Sir
(2691 7163)
報名：中心報名處
報名日期：
11月15 - 21日





牛年樂玩手工藝

錦鯉掛飾工作坊

新春賀卡製作

日期	: 2021 年 2 月 23 日 (二)
時間	: 下午 2:00 - 4:00
地點	: 中心雅膳
名額	: 10人
費用	: 全免



鄰舍輔導會深水埗康齡社區服務中心

3♥14 我們一樣是主角

護老者加油大行動

Programs/Projects



救世軍大埔長者社區服務中心
The Salvation Army
Tai Po Multi-service Centre for Senior Citizens

「玉兔迎春」探訪活動

2023年3月9日

兔年大吉

CASES

- Carer support
- Health issues: dementia/cancer/stroke
- Family relationship
- Bereavement
- Emotional
- Case management for referrals of tangible services

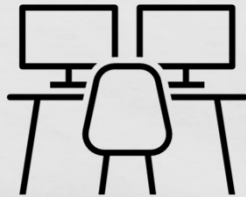
TECHNICAL CONCERNS



- Due to the busy schedule of DECC and NEC, best to book the rooms for your group and programs at the beginning of placement
- In C&A home setting, please clarify the escort arrangement, residents' routine such as bathing, exercises, nap time, meal time in the group or program planning stage. Attend the handover meeting and read the log book (if possible)
- Ensure to participate in the centre's daily routine and frontline line service during your placement. Avoiding doing HKU assignments during the placement period.
- Observe and respect the administrative requirement and time frame

ATTITUDES

- Punctual
- Self-initiative to learn from different teams
- Polite, respect and care
- Accountable & Be independent
- Self-discipline with good time and workload management
- Flexible and willing to shoulder additional duties
- Blend into the team
- Update IC/team lead your work status proactively



https://www.Swd.Gov.Hk/en/index/site_pubsvc/page_elderly/

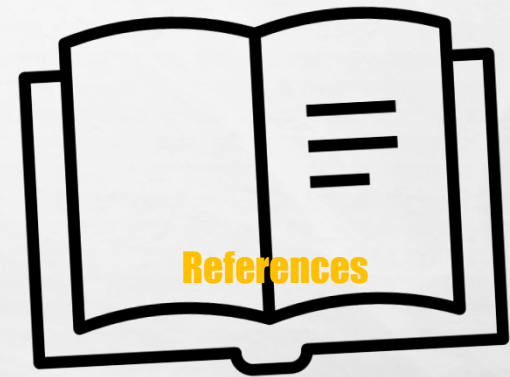
https://www.elderlycommission.gov.hk/cn/About_Us/Introduction.html

<https://www.elderly.gov.hk/cindex.html>

<https://www.E123.Hk/>

<https://www.Cadenza.Hk/e-tools/en/index.php>

<https://www.Ioa.Cuhk.Edu.Hk/end-of-life-care/>





Compulsory!

IMPORTANT DATES

- **Agency Visit Date:**

1) 毋忘愛 FORGET THEE NOT

4th Oct, 2023 (Wed) 10:00am – 12:00pm

2) 賽馬會「A家」樂齡科技教育及租賃服務中心:導賞團+工作坊

11th Oct, 2023 (Wed) 10:00am-12:15 pm

- **Mid-Term Sharing**

6th December (Wed), 2023 9:00am – 12:00pm, CJT-565

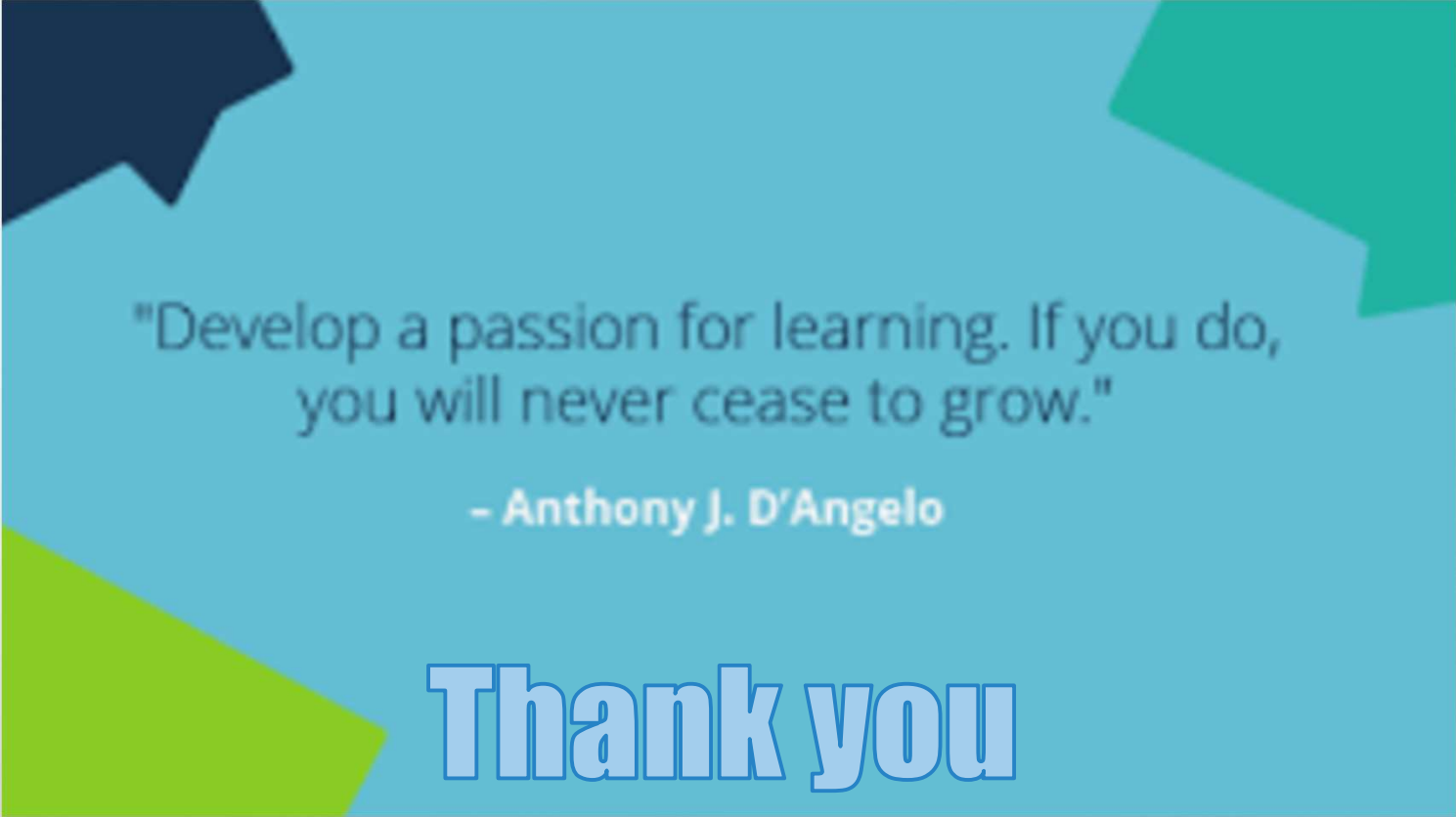
- **Contact Person:**

Ms Edith Fung

Elderly Services Fieldwork Supervisor

Email: edith828@hku.Hk

Tel: 3917 4110



"Develop a passion for learning. If you do,
you will never cease to grow."

- Anthony J. D'Angelo

Thank you

